

# Gooseneck with adhesive/ putty flange and fixed/loose flange construction

SHDD(A)/KF/F+L/W1



## Application range

- Suitable for all flat roof constructions
- For bitumen sheets and roof membranes that are approved with fixed and loose flange/ adhesive flange
- For roof entries according to DIN 18531

## Material specifications

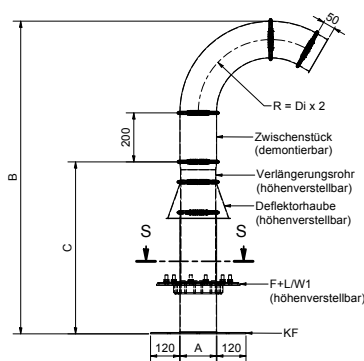
- Gooseneck (galvanized)
- Sealing elements (EPDM)
- Second sealing level fixed and loose flange (V2A, EPDM)

## Technical information

- Gas- and watertight with suitable sealing inserts
- Storm-proof, UV- and weather-resistant
- Non-combustible (building material class A1)
- Height and direction in galvanized version can also be changed after installation and can be swiveled 360°
- Upper fixed and loose flange construction: loose flange 60 mm circumferential, fixed flange 70 mm circumferential
- Mounting flange designed as adhesive flange 120 mm circumferential
- Optional: two sealing inserts to prevent condensation formation
- Optional: 3 mm EPDM supplements depending on the manufacturer's specifications for the surface sealing
- Optional: Available in V2A and V4A (height and direction not adjustable)

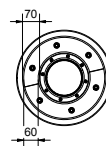
## Side view gooseneck

SHDD(A)/KF/F+L/W1



## Gooseneck cross-section

SHDD(A)/KF/F+L/W1



# Gooseneck with adhesive/ putty flange and fixed/loose flange construction

SHDD(A)/KF/F+L/W1



## Technical data

A in mm	C in mm	B in mm	Outer edge
100	From 792 to 977	From 1276 to 1461	345 mm
150	From 792 to 977	From 1401 to 1586	395 mm
200	From 792 to 977	From 1528 to 1713	445 mm
300	From 792 to 977	From 1778 to 1962	545 mm