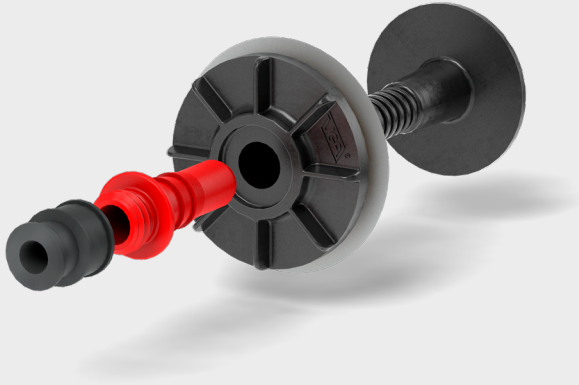


# Single-utility house entries

SPE16



## Application range

- For 25 mm drill holes in WU constructions (class 1 and 2)
- For black trough with liquid-applied sealing compounds according to DIN 18533
- For the load case of non-pressing water (W1-E)
- For the load case of pressurized water with moderate exposure (W2.1.-E)

## Material specifications

- Sealing elements (TPE)
- Clamping sleeve (HDPE)
- FHE hose (rigid PVC / soft PVC)
- Butyl cord (butyl rubber)

## Technical information

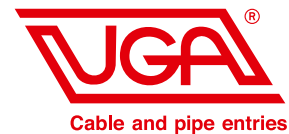
- Gas- and watertight up to 1 bar
- Sealing elements for 1 speed pipe with diameter 7 – 14 mm
- Sealing elements for 3 speed pipe with diameter 5 – 7 mm
- Wall thickness: 200 – 600 mm or 200 – 1100 mm
- No special installation tool required
- With integrated tight blank cover
- Flexible protective hose serves as kink protection
- Removable if necessary

## Test reports

- MFPA Leipzig tested up to 1 bar for black trough W2.1-E (30 mm flange)

# Single-utility house entries

SPE16



## Standard variants

Product name	Wall thickness	Sealing
SPE16/1x(7-14)/700	200 – 600 mm	1 x 7 – 14 mm
SPE16/1x(7-14)/1200	200 – 1100 mm	1 x 7 – 14 mm
SPE16/3x7/700	200 – 600 mm	3 x 5 – 7 mm
SPE16/3x7/1200	200 – 1100 mm	3 x 5 – 7 mm
SPE16/1x(7-14)+3x7/700	200 – 600 mm	1 x 7 – 14 mm or 3 x 5 – 7 mm
SPE16/1x(7-14)+3x7/1200	200 – 1100 mm	1 x 7 – 14 mm or 3 x 5 – 7 mm