



Building earthings

Armour earthing | Bushing earthing |
Connecting elements



⚡ Building earthings

Armour earthing, bushing earthing and connection elements

We have had our earthing systems thoroughly tested by the accredited Eurotest testing laboratory – for your safety and that of your construction projects. We also test every single earthing system before it is used. Do you have any special requirements? Please get in touch with us!



Safely earthed in all circumstances

Whether in existing or new buildings, an earthing system is a basic requirement for the safe operation of their electrical systems. Above all, however, it protects people from dangerously high voltages and currents. The principle: If the earth has a different electrical potential to the building, this must be equalised. We place the highest value on safety: we subject every earthing system to a short-circuit test – for your protection and that of your property.

Our high-quality building earthings (GE) can be integrated into your construction project in various ways: welded or bolted as armour earthing, set in concrete or even retrofitted to set an earthing rod or connect the internal earthing system to an external one. Of course, we also offer suitable connection elements for connecting common earthing materials.

Armour earthing

Secure your projects efficiently with our tried-and-tested armour earthing system. With this earthing connection point, you can securely connect metal reinforcement rods or earthing straps in concrete or reinforced concrete structures and integrate them into the earthing system.

Depending on your requirements, you can choose from our product variants, which can either be attached to the reinforcement structure with a flat round connector or welded directly to the reinforcement. After concreting, you can simply connect standard earthing material to the connection thread and create a connection that complies with regulations.

Further advantages:

- Can be screwed or welded for optimum flexibility during installation
- Compatible with common earthing materials
- Ideal for use in concrete or reinforced concrete structures

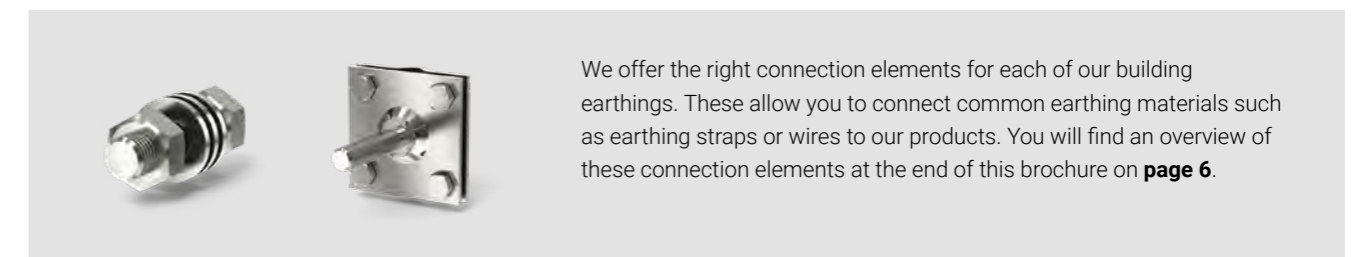
Feed-through earthing

If you need to earth conductive parts that pass through a wall or other barriers, entry earthing is your choice. You can set it in concrete or retrofit it as required. For example, you can also connect earthing devices outside buildings to the equipotential bonding of buildings.

After concreting or retrofitting, you can simply connect standard earthing material and create a connection in accordance with regulations.

Further advantages:

- Integrated water barrier for entries to be set in concrete
- Available for different wall thicknesses
- Waterproof concrete stress class 1 and 2



Put your trust in our building earthings

- Every earthing device short-circuit tested at UGA
- Available in flexible lengths
- Formwork aid for every earthing device to be concreted
- Permanent marking with yellow signal colour and earthing symbol

Building earthings

Armour earthing

Safe and proven

Secure your projects efficiently with our tried-and-tested armour earthing systems. With these earthing connection points, you can securely connect metal reinforcement rods or earthing straps in concrete or reinforced concrete structures and integrate them into the earthing systems.



GE-P

Earthing connection point with flat round connector and one connection point. Connection without welding to concrete armouring or earthing strap using flat round connector. For connecting earthing systems, down conductors and armouring. Rigid earthing connection point for flush embedding in concrete.

- Armour earthing with flat round connector and one connection point
- For connection threads M12 and M16 (connection element optionally available)
- Waterproof concrete stress class 1 and 2



Short-circuit tested



120–550 mm



GE-A

Earthing connection point with connection bolt for welding to a reinforcement with a connection point for flush embedding in concrete. The stainless steel version impresses with its resistance to corrosion.

- Reinforcement earthing with connecting bolt
- For connection threads M12 and M16 (connection element optionally available)
- Waterproof concrete stress class 1 and 2



Short-circuit tested



For M16 with 31.36 kA/100 ms



GE-AB

Earthing connection point with earthing strap for welding to a reinforcement with a connection point for flush embedding in concrete. The stainless steel version impresses with its resistance to corrosion.

- Reinforcement earthing with earthing strap
- For connection threads M12 and M16 (connection element optionally available)
- Waterproof concrete stress class 1 and 2



Short-circuit tested



For M16

Building earthings

Feed-through earthing

For setting in concrete or retrofitting

If you need to earth conductive parts that pass through a wall or other barrier, entry earthing is your choice. You can set it in concrete or retrofit it as required.



GE-D

Insulated bushing earthing for setting in concrete with water barrier. The stainless steel version impresses with its resistance to corrosion.

- Insulated bushing earthing
- For connection threads M12 and M16 (connection element optionally available)
- Watertightness to the concrete



Short-circuit tested



100–500 mm



GE-D-P

Bushing earthing with flat round connector and two connection points. Connection without welding to concrete reinforcement using round flat connector. Suitable for flush embedding in concrete.

- Feed-through earthing with flat round connector and two connection points
- For connection threads M12 and M16 (connection element optionally available)
- Waterproof concrete stress class 1 and 2



Short-circuit tested



100–500 mm

Do you need a different solution?

Please feel free to contact us. We can also manufacture your customised earthing system. You can find your personal contact on our website. Simply scan the QR code with your mobile phone.



Legend:



RWE Eurotest



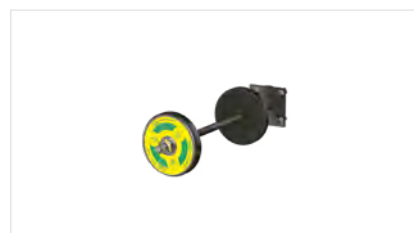
Overall length of ...



Wall thicknesses from ...– ... mm

⚡ Building earthings

Feed-through earthing



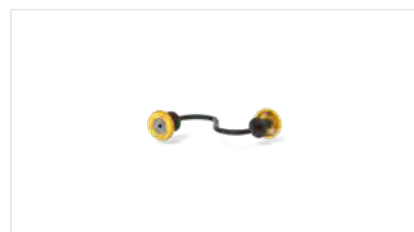
GE-ND

Bushing earthing system for retrofitting. Rigid stainless steel entry. Installation in the wall through full bore.

- Bushing earthing system for retrofitting
- For connection threads M12 and M16 (connection element optionally available)



100–420
mm



GE-FD

Flexible earthing system with water barriers and two connection points for more flexibility. Installation for offset connection points. Suitable for flush embedding in concrete.

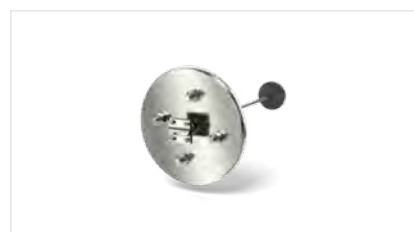
- Flexible, insulated bushing earthing system with water barrier and two connection points
- For connection threads M12 and M16 (connection element optionally available)
- Waterproof concrete stress class 1 and 2



Short-circuit
tested



200 mm



GE-ND/F+L/W(1/2)/(L)/V4A/M(12/16)

Bushing earthing system for retrofitting. Rigid stainless steel entry. Installation in the wall through full bore. Connection to building waterproofing (black trough) in accordance with DIN 18533 possible using fixed and loose flange.

- Bushing earthing system for retrofitting
- For the black trough load case for non-pressing water (W1: in accordance with DIN 18533 W1.1-E, DIN 18533 W1.2-E) and pressing water (W2: DIN 18533 W2.1-E, DIN 18533 W2.2-E)
- For connection threads M12 and M16 (connection element optionally available)



200 mm

⚡ Building earthings

Connecting elements

The perfect addition

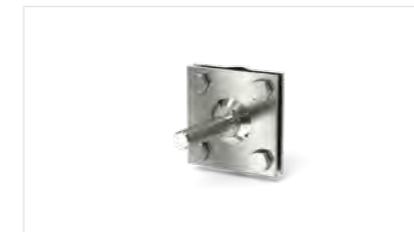
We offer the right connection elements for each of our building earthings. This allows you to connect common earthing materials such as earthing straps or wires to our products.



GE-ABM

Connection element for connection point on a building earthing for cables with cable lugs, for example.

- Connection element for building earthing
- For connection thread M12



GE-FRV

Connection element for connection point to building earthing in the form of a flat round connector.

- Connecting element for building earthing
- For connection thread M12

Downloads

From data sheets to installation instructions – you can find more information about our products in the download area on our website. Simply scan the QR code to get there.



Legend:



RWE Eurotest



Wall thicknesses
from ...– ... mm

Building earthings

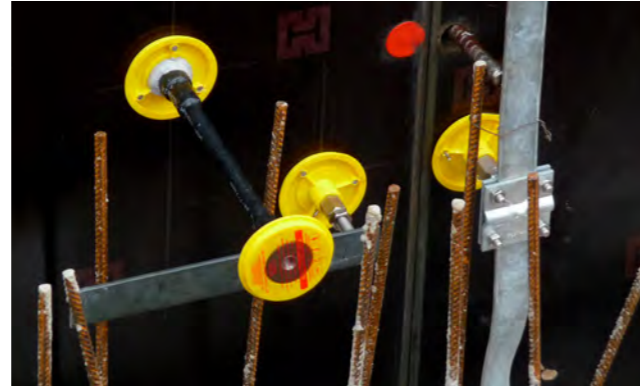
Additional information

Installation situations and example applications

See our services for yourself in real-life application: the following installation situations and practical examples illustrate our customised solutions.



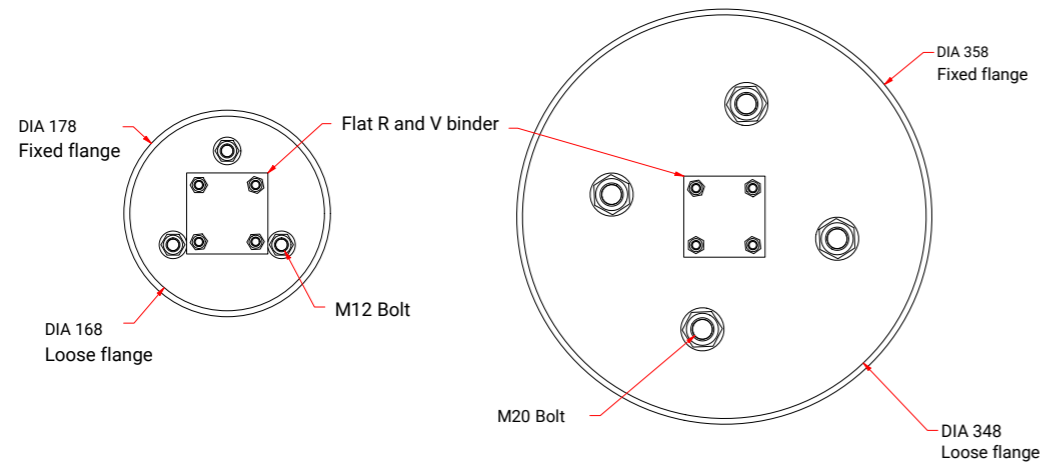
Special construction of a building earthing for transmission system operators



Building earthing: GE-D, GE-AB and GE-P

Earthing for retrofitting with fixed and loose flange constructions

GE-ND/F+L/W(1/2)/(L)/V4A/M(12/16)



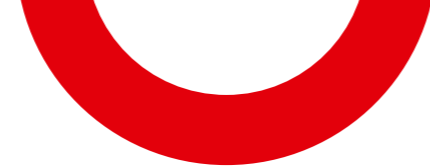
Ideal accessories

Explore our range of accessories and practical extras on our website. Simply scan the QR code to get there.



Notes





Grid of dotted lines for notes.

Grid of dotted lines for notes.





Get in touch with us!

E-MAIL info@uga.eu

HOTLINE +49 7324 9696-33

Contact person

Scan this QR code to find the right contact person for your in-house or field service:

