

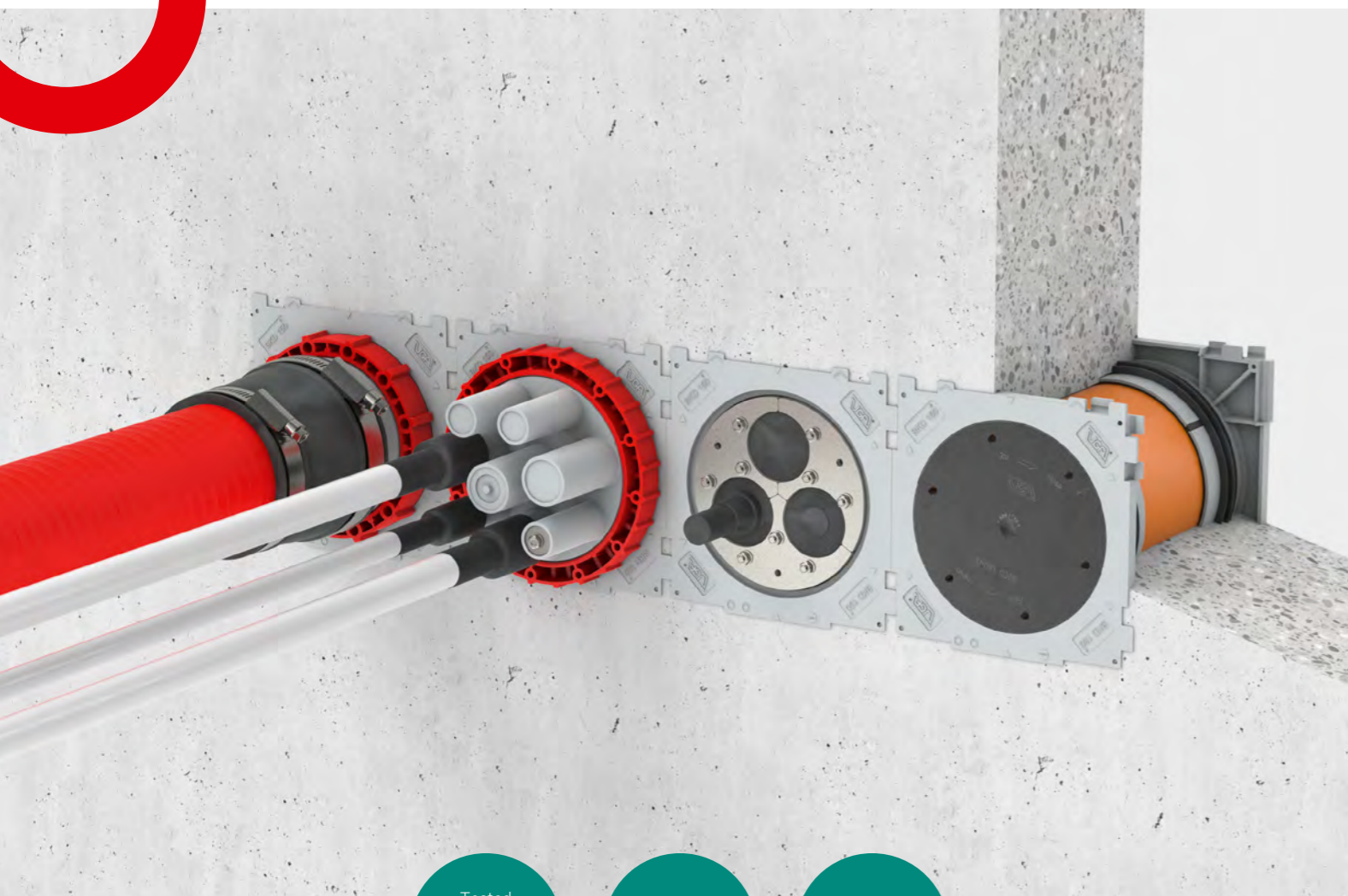
□ **Cable entries**
BKD 150 | BKD 90 | KD 110



▣ Cable entries

Wall inserts, system covers and inserts

We offer refurbishment solutions for all older, commercially available cable entries – such as HD125, KD150, EK194/206, KD85, HD85 and others. Talk to us – we are here for you.



Tested system with coordinated components

Suitable for all applications

Gas- and watertight after concreting

There is no easier way to seal cables and pipes

You remain flexible with our modular cable entries. At the heart of the system are wall inserts, which you can combine with system covers and inserts as required. Thanks to the innovative click system, you simply plug the entries together and can arrange them on top of and next to each other in stacks – easy to plan with fixed centre distances.

You always benefit from our commitment to maximum safety: as soon as the wall inserts are set in concrete, they are gas-tight and watertight. You can then decide how you want to use the entry or whether it should remain unassigned for the time being. You can also use the bayonet system to safely and easily attach inserts or cable protection conduits at a later date.

The wall insert – the wall component

The wall insert is the centrepiece of the cable entry. Whether the single, double, angled or flange variant, the bayonet system accepts a variety of system covers and inserts to suit your requirements. We will be happy to manufacture wall inserts for you according to wall thickness and application.

The bayonet catch snaps accurately into place during installation and is easier and safer to fit than a thread. It also ensures a seal between the wall insert and the rest of the system.

Further advantages:

- Longitudinally watertight: integrated seal (water barrier)
- Dirt-free installation thanks to the supplied cover that is leak-tight against gas and pressing water (blind plug)
- Allows better planning in your project: penetration arrangement fixed by specified centre distance
- Customisation of wall inserts on request (application, wall thickness)

System inserts – also for subsequent sealing

The principle of the system inserts is simple and effective: when you tighten the screws, stainless steel plates press against each other and the rubber between them expands. This creates pressure that safely and permanently seals against gas and water. Thanks to the bayonet connection, the system insert is locked in place and cannot tip out.

Choose from 3 basic variants: you are flexible with the interchangeable insert, which you can also change at a later date. The insert with multilayer technology is suitable for many standard situations. You can adjust and customise it to fit any size: for up to 10 cables or pipes of different diameters.

System covers – many possibilities

System covers are quick and easy to install on the bayonet connection of the wall insert. Choose the right variant for your construction project from our portfolio – the largest on the market.

The socket cover is suitable for the entry of several pipes and cables from 7 to 108 mm in diameter. The thermo-shrink sleeves supplied provide a reliable seal. Unused pipe sleeves can be fitted with sealing plugs and assigned later. If you want to securely connect smooth or corrugated cable protection conduits, choose a sleeve cover. We offer a wide range of EPDM sleeves for this purpose.

Further advantages:

- Leak-tight against gas and pressing water immediately after installation
- Secure installation thanks to bayonet catch
- Compatible with all common systems
- Protected against self-opening and rodent damage
- Standard thermo-shrink sleeves (TM), cold shrink sleeves (KM) optionally available

We will be happy to customise the insert with adapted press plates for you.

Further advantages:

- Designed for high radial load (no buckling)
- Longitudinally watertight thanks to welded-on bolts and closed plate on one side
- Compatible with all common systems
- Has a sound-insulating effect, protected against rodent damage

The benefits of our cable entries

- Easy to install: low system weight combined with high stability
- Excellent planning options: many variants and connection options
- Suitable for your projects: cable entries for all applications, wall types and wall thicknesses
- Additional safety: can be combined with S90 fire protection
- Guaranteed: tested by the German industry association for cable and pipe entries into buildings (FHRK)

■ BKD 150

Bayonet wall inserts

One system for every purpose

The BKD 150 system always offers the right variant for the changing requirements on construction sites. Single, double, angular wall inserts and flange wall inserts are available. With a clear width of 150 mm, it is the most popular system on the market. For you, this also means that you have the widest choice. Our components undergo extensive testing and are tested by the FHRK in particular – for your safety.



Single wall insert

Quick to install and saves you money: The one-sided connection for system covers or inserts leaves all options open to you. You are on the safe side with the blind plug supplied, as the wall insert is leak-tight against gas and pressing water immediately after concreting – even without reworking.

- One-sided mounting of system covers or system inserts
- Quick installation in waterproof concrete structures (class 1 and 2)
- Simple bundle possible by plugging together
- Cost-effective variant

Product name:
BKD150-K/(L)



Lloyd's
Register



2.5 bar



70–500
mm



Double wall insert

Quick to install and doubly secured: With 2 connections for system covers or inserts, you have maximum flexibility. You stay on the safe side with the blind plugs supplied, as the wall insert is leak-tight against gas and pressing water immediately after concreting – even without reworking.

- System covers or system inserts can be fitted on both sides
- Quick installation in waterproof concrete structures (class 1 and 2)
- Simple bundle possible by plugging together

Product name:
BKD150-K2/(L)



Lloyd's
Register



2.5 bar



100–500
mm



Double wall insert for double/element walls

Thanks to the additional rubber seal in the centre, this double wall insert is also suitable for double or element walls. With 2 connections for system covers or inserts, you have maximum flexibility. After concreting, the wall insert is leak-tight against gas and pressing water – even without reworking.

- For double or panelled walls thanks to additional sealing rubber
- System covers or system inserts can be fitted on both sides
- Bundle possible by plugging together

Product name:
BKD150-K2-EW/(L)



Lloyd's
Register



2.5 bar



100–500
mm



Mounting flange with fastening elements

You simply plug the mounting flange into a core drilling or wall opening up to a maximum diameter of 150 mm. Depending on your budget, you can choose fastenings made of stainless steel (V4A) or in a cheaper galvanised version.

- Subsequent dowelling to core drillings up to 150 mm
- One-sided mounting of system covers or system inserts
- Quick installation in waterproof concrete structures (class 1 and 2)

Product name:
BKD150-AF-235/BE-VZ
BKD150-AF-235/BE-A4



LRQA



2.5 bar



Angular single wall insert

For every angle of your project: Reliably seal sloping penetrations at angles of 30°, 45° and 60°. Thanks to the polystyrene wedge and steel frame, fixing for installation is particularly easy. The one-sided connection for system covers or inserts leaves all options open to you. After concreting, the wall insert is leak-tight against gas and pressing water.

- Safe installation of rigid, large cables/pipes
- Inclined penetration at angles of 30°, 45° and 60°
- One-sided mounting of system covers or system inserts
- Quick to install in waterproof concrete structures (class 1 and 2)

Product name:
BKD150-K-S30/(L)
BKD150-K-S45/(L)
BKD150-K-S60/(L)



Lloyd's
Register



2.5 bar



200–500
mm

This is why high-quality cable and pipe penetrations are important

With products from UGA, you can protect your buildings from water, dangerous gases and vermin – and prevent serious damage. Find out more on our website. Simply scan the QR code.



Legend:



Tested
by ...



Gas- and watertight
up to ... bar



Wall thicknesses
from ... – ... mm



Angular wall insert

For every angle of your project: Double-seal sloping penetrations at an angle of 30°, 45° and 60°. Thanks to the polystyrene wedge and steel frame, fixing for installation is particularly easy. With 2 connections for system covers or KSS systems, you have maximum flexibility. After concreting, the wall insert is leak-tight against gas and pressing water.

- Safe installation of rigid, large cables/pipes
- Inclined penetration at angles of 30°, 45° and 60°
- System covers or system inserts can be fitted on both sides
- Quick to install in waterproof concrete structures (class 1 and 2)



Lloyd's Register



2.5 bar



200–500 mm

Product name:

- BKD150-K2-S30/(L)
- BKD150-K2-S45/(L)
- BKD150-K2-S60/(L)



Wall insert with cuff technology

Simple elastic connection: Use a sleeve to connect empty conduits or flexible cable protection conduits. The one-sided connection for system covers or inserts leaves all options open to you. After concreting, the wall insert is leak-tight against gas and pressing water – even without reworking.

- One-sided mounting of system covers or system inserts
- Quick installation in waterproof concrete structures (class 1 and 2)
- Simple bundle possible by plugging together



0.5 bar



200–500 mm

Product name:

- BKD150-K-MA125/(L)
- BKD150-K-MA145/(L)
- BKD150-K-MA170/(L)

Clamping range:

- 125 = 110 mm–125 mm
- 145 = 130 mm–145 mm
- 170 = 160 mm–170 mm



Wall insert with pipe fitting

Connected in no time at all: You can connect smooth-walled cable protection conduits using a pipe fitting. The one-sided connection for system covers or inserts leaves all options open to you. After concreting, the wall insert is leak-tight against gas and pressing water.

- One-sided mounting of system covers or system inserts
- Quick installation in waterproof concrete structures (class 1 and 2)
- Simple bundle possible by plugging together



0.5 bar



200–500 mm

Product name:

- BKD150-K-SM110/(L)
- BKD150-K-SM125/(L)
- BKD150-K-SM160/(L)



Angular single wall insert with cuff technology

Flexible connection at any angle: Use a sleeve to connect empty conduits or flexible cable protection conduits to angled penetrations. The one-sided connection for system covers or inserts leaves all options open to you. After concreting, the wall insert is leak-tight against gas and pressing water.

- Safe installation of rigid, large cables/pipes
- Inclined penetration at angles of 30°, 45° and 60°
- One-sided mounting of system covers or system inserts
- 2 high-quality tensioning straps for secure fastening



0.5 bar



200–500 mm

Product name:

- BKD150-K-S30/MA125/(L)
- BKD150-K-S45/MA125/(L)
- BKD150-K-S60/MA125/(L)
- BKD150-K-S30/MA145/(L)
- BKD150-K-S45/MA145/(L)
- BKD150-K-S60/MA145/(L)
- BKD150-K-S30/MA170/(L)
- BKD150-K-S45/MA170/(L)
- BKD150-K-S60/MA170/(L)

Clamping range:

- 125 = 110mm–125 mm
- 145 = 130 mm–145 mm
- 170 = 160 mm–170 mm



Double wall insert with adhesive/adhesive flange

Suitable for sealing in the black trough (DIN 18533): The 50 mm wide, all-round PVC adhesive flange is suitable for liquid sealants and non-pressing (W1) or moderately pressing water (W2.1-E). With 2 connections for system covers or KSS systems, you have maximum flexibility.

- For black troughs with liquid applied sealants in accordance with DIN 18533
- System covers or system inserts can be fitted on both sides
- Customised arrangement of the wall insert before production



1 bar



200–500 mm

Product name:

- BKD150-K2-KF-W1/PVC/(L)

Legend:



Tested by ...



Gas- and watertight up to ... bar



Wall thicknesses from ... – ... mm



Product name:
BKD150-AF-NA-F+L-W(1/2)/V2A

Mounting flange with fixed/loose flange design

The mounting flange with integrated fixed/loose flange construction can be subsequently anchored to a core drilling or wall opening – ideal for your renovation project. The waterproofing membrane can then be professionally re-adjusted. The fixed and loose flange construction can be designed for both non-pressing water (W1) and pressing water (W2).

- Subsequent dowelling in the black trough
- One-sided connection of system covers or system inserts
- 10 mm rubber flange gasket



Product name:
BKD150-K2-F+L-W(1/2)/V2A

Double wall insert with fixed and loose flange design

Suitable for waterproofing in black troughs (DIN 18533): The circumferential fixed and loose flange design is suitable for sheet-type waterproofing. With 2 connections for system covers or inserts, you have maximum flexibility. You are on the safe side with the blind plugs supplied, as the wall insert is leak-tight against gas and pressing water immediately after concreting – even without reworking.

- Available for all black trough load cases in accordance with DIN 18533
- System covers or system inserts can be fitted on both sides
- Customised arrangement of the wall insert before production



Product name:
BKD150-ASH

Spacer

More safety for bundle: The ASH Spacer increases the centre distance of the wall insert from 210 mm to 250 mm. The increased space means that larger pipes can be connected more easily. The greater spacing allows concrete to penetrate the gaps better, thus ensuring a higher level of leak-tightness.

- Spacer for BKD 150
- Increased centre distance for bundle
- Better and easier concrete compaction possible
- More space when connecting large pipes

Abbreviations

Product index

Abbreviation	Cancelled
F+L	Fixed-loose flange construction
SM	Pipe fitting
MA	Cuff
W1	Non-pressing water in accordance with DIN 18533
W2	Pressing water in accordance with DIN 18533
KF	Filler/adhesive flange
NA	Subsequent installation
AF	Mounting flange

Product index

Product index for BKD 150 bayonet wall inserts (examples)

Bayonet single wall insert	Bayonet double wall insert as stack 2 x 3	Bayonet angular wall insert 45° as a double wall insert
<p>BKD150-K/(L)</p> <ul style="list-style-type: none"> Wall thickness in mm Single wall insert System identifier 	<p>BKD150-K2/2x3/(L)</p> <ul style="list-style-type: none"> Wall thickness in mm 3 wall inserts next to each other 2 wall inserts above each other Double wall insert System identifier 	<p>BKD150-K2-S45/(L)</p> <ul style="list-style-type: none"> Wall thickness in mm Angular wall insert 45° Double wall insert System identifier
<p>Bayonet double wall insert</p> <p>BKD150-K2/(L)</p> <ul style="list-style-type: none"> Double wall insert 	<p>Bayonet double wall insert for Double/element walls</p> <p>BKD 150-K2-EW/(L)</p> <ul style="list-style-type: none"> Double/element walls 	

Downloads

From data sheets to installation instructions – you can find more information about our products in the download area of our website. Simply scan the QR code to get there.



Legend:



Gas- and watertight

Suitable for your application

Thanks to their split design, system inserts are perfect for sealing cables and pipes that have already been laid. The inserts can also be replaced at a later date and are made of high-quality materials such as A2 stainless steel and EPDM.

System covers also offer advantages: they are cost-effective and can be used flexibly in any building situation thanks to hot-shrink sleeves and collars. Another plus: the highly robust polycarbonate makes them particularly resistant.



Blind cover

Stay flexible when plans change: A blind cover is included with all BKD150 cable entries. This allows you to seal your wall insert at a later date to make it gas-tight and watertight.

- Blind plug for BKD 150 wall inserts
- GSS spanner required for assembly
- Inspection certificate: Lloyd's Register

Product name:
BKD150-D



Lloyd's Register



2.5 bar



System cover with cuff technology

Your choice if you want to connect a conduit or flexible cable protection conduit: Thanks to a large selection of collars, you can connect smooth-walled pipes and corrugated pipes with a diameter of 40–170 mm. High-quality tensioning straps provide the necessary hold. The cover itself is double-secured.

- Sleeve for connecting pipes with a diameter of 40–170 mm
- 2 high-quality tensioning straps for secure fastening
- Doubly secured with bayonet and screw connection

Product name:
BKD150-D-MA40-50 BKD150-D-MA100-110
BKD150-D-MA53-63 BKD150-D-MA115-125
BKD150-D-MA65-75 BKD150-D-MA130-145
BKD150-D-MA75-90 BKD150-D-MA150-160
BKD150-D-MA160-170



Lloyd's Register



0.5 bar



System covers for transformer stations

Seal transformer stations safely and conveniently. This system cover includes 3 curved and flexible cable protection conduits for cables with a diameter of 26–53 mm – ideal for wall inserts set in concrete in sloping base plates. Thanks to the hot-shrink sleeves, the spiral conduits are gas- and watertight up to 0.5 bar.

- System cover with 3 flexible cable protection conduits
- Sealing of 3 cables 26–53 mm in diameter
- GSS spanner and hot air gun required for assembly

Product name:
BKD150-D-3/59(3/3)-FHE60/400-TM



Lloyd's Register



0.5 bar



System insert with multilayer technology

If you want to seal existing cables and pipes retrospectively, this insert is your solution. Thanks to the multilayer technology, you can adapt the system insert flexibly and directly on site – this is easy thanks to its division. The insert can accommodate up to 10 cables or pipes with a diameter of 4–110 mm.

- Sealing of 10 cables/pipes between 4–110 mm
- Various inserts for flexible customisation on site
- Sealing of already laid cables and pipes possible

Product name:
BKD150-E-ZS/V2A/EPDM/1x(22-75)
BKD150-E-ZS/V2A/EPDM/1x(70-110)
BKD150-E-ZS/V2A/EPDM/3x(22-54)
BKD150-E-ZS/V2A/EPDM/6x(4-32)
BKD150-E-ZS/V2A/EPDM/9x(4-25)
BKD150-E-ZS/V2A/EPDM/4x(4-32)+6x(4-20)



Lloyd's Register



2 bar



System cover with hot-shrink sleeve

Quick and easy to install – and then immediately pressure-tight: Depending on the variant, this system cover can accommodate up to 8 cables and pipes with a diameter of 7–108 mm. Precisely fitting hot-shrink sleeves reliably seal media cables with larger clamping ranges, for example. Cold-shrink sleeves are also available on request.

- 5 variants for up to 8 cables/conduits 7–108 mm in diameter
- Precisely fitting hot-shrink sleeves for immediate sealing after installation
- Doubly secured with bayonet and screw connection

Product name:
BKD150-D-1/80-TM
BKD150-D-1/110-TM
BKD150-D-3/59(3/3)-TM
BKD150-D-7/38(7/6)-TM
BKD150-D-8/35(4/2)/25(4/2)-TM



Lloyd's Register



2.5 bar



Quality tested – guaranteed!

Our products meet the highest quality standards – for your safety. That is why you will also find the FHRK quality seal on our products. UGA SYSTEM-TECHNIK GmbH & Co. KG is a long-standing member of the Fachverband Hauseinführungen für Rohre und Kabel e. V. German association for pipe and cable building lead-ins.



Legend:



Tested by ...



Gas- and watertight up to ... bar



System insert with interchangeable insert

Fits your requirements too: We manufacture the interchangeable insert made of EPDM individually for you so that it reliably seals your cable situations. Another advantage: you can also replace and install the insert at a later date – for maximum flexibility.

- Customised production for numerous cable situations
- EPDM rubber insert can be replaced at a later date
- Sealing of already laid cables and pipes possible

Product name:
BKD150-E-WE/V2A/EPDM/(Z)x(D)

2 bar



System insert with customised press plates

Customised for you: The individual system inserts are manufactured with customised press plates to reliably seal your cable situations. We always supply the customised system inserts in a split version for installation with cables and media that have already been laid.

- Customised production for numerous cable situations
- Sealing of already laid cables and pipes possible
- Greater safety with higher loads and higher tolerances on the construction site

Product name:
BKD150-E/V2A/EPDM/(Z)X(D)

2.5 bar

Maximum occupancy table: System insert with interchangeable insert

Z = number of cables/lines	D = diameter of the cables/lines
0	Blind plug possible
1	up to 110 mm
3	up to 42 mm
5	up to 34 mm
7	up to 29 mm
9	up to 24 mm

Other assignments and combinations of different diameters also possible.

Legend: Tested by ... Gas- and watertight up to ... bar

Maximum occupancy table: System insert with multilayer

Standard variants

Product name	Number of cables/pipes	Cable/pipe D in mm
BKD150-E-ZS/V2A/EPDM/1x(22-75)	0-1	22-75
BKD150-E-ZS/V2A/EPDM/1x(70-110)	0-1	70-110
BKD150-E-ZS/V2A/EPDM 3x(22-54)	0-3	22-54
BKD150-E-ZS/V2A/EPDM 6x(4-32)	0-6	4-32
BKD150-E-ZS/V2A/EPDM 9x(4-25)	0-9	4-25
BKD150-E-ZS/V2A/EPDM 4x(4-32) + 6x (4-20)	0-10	
	thereof 0-4	4-32
	thereof 0-6	4-20

Maximum occupancy table for customised press plates

Maximum occupancy

Z = number of cables/lines	D = diameter of the cables/lines
0	Blind plug possible
1	up to 122 mm
3	up to 61 mm
5	up to 47 mm
7	up to 41 mm
9	up to 32 mm

Other assignments and combinations of different diameters also possible.



The right variant for your project

No matter how individual the requirements for your building project may be, we have the right solution for you or will be happy to manufacture it for you. Just get in touch with us. You can find your contact partner on our website.

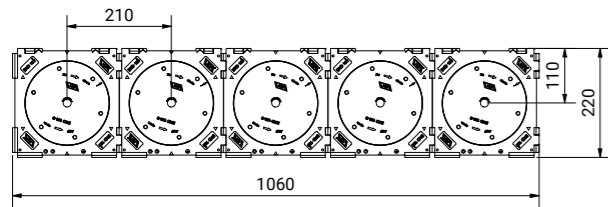


Technical assembly drawings

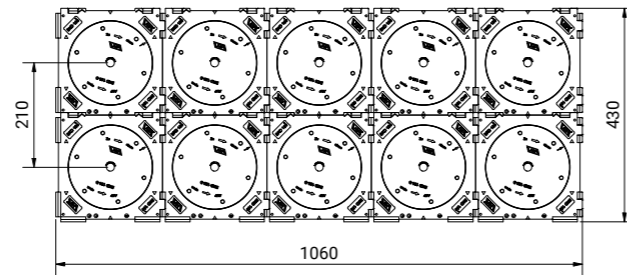
These drawings illustrate the advantages of our cable entries – such as variable bundle or the excellent ease of planning thanks to the fixed centre distances.

Wall inserts: Stack without spacers

BKD150-K(2)/1x5/(L)

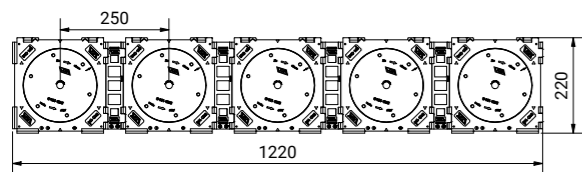


BKD150-K(2)/2x5/(L)

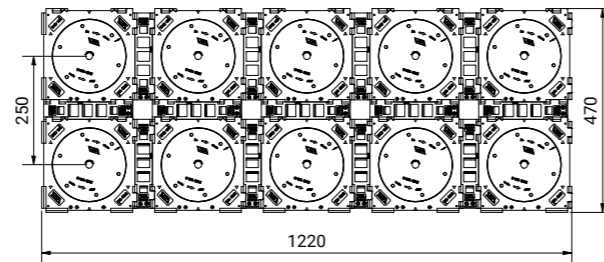


Wall inserts: Stack with spacer

BKD150-K(2)/1x5/(L) with BKD150-ASH

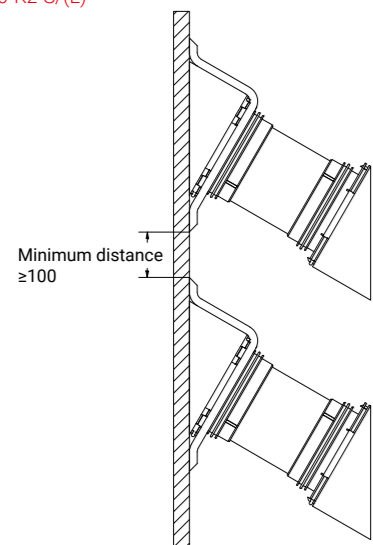


BKD150-K(2)/2x5/(L) with BKD150-ASH



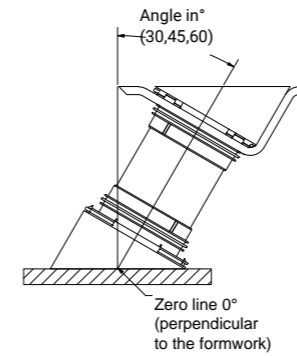
Angular wall inserts: Minimum distance above each other

BKD150-K2-S/(L)



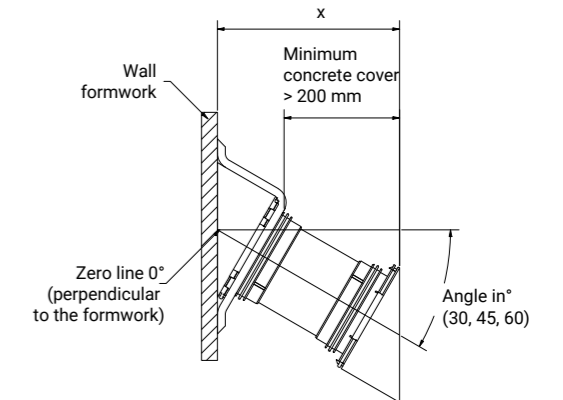
Angular wall insert: Floor installation

BKD150-K2-S/(L)



Angular wall insert: Wall installation

BKD150-K2-S/(L)



Installation situations and example applications

See our services for yourself in real-life application: the following installation situations and Practical examples illustrate our customised solutions.



BKD150-K2-F+L-W2/2x5/(L)



BKD150-K2/(L) with system cover BKD150-D-MA100-110

Ideal accessories

Spacers, mounting tools and more – explore our range of accessories and practical extras on our website. Simply scan the QR code to get there.



A compact and versatile system

The BKD 90 system always offers the right variant for the changing requirements on construction sites. Single, double, angular wall inserts and flange wall inserts are available.

This system has a clear width of 85 mm and is your choice for tight installation situations and when you have less space available. Compared to the competition, UGA offers the largest selection of system components.



Product name:
BKD90-K/(L)

Single wall insert

Quick to install and saves you money: The one-sided connection for system covers or inserts leaves all options open to you. You are on the safe side with the blind plug supplied, as the wall insert is leak-tight against gas and pressing water immediately after concreting – even without reworking.

- One-sided mounting of system covers or system inserts
- Quick installation in waterproof concrete structures (class 1 and 2)
- Simple bundle possible by plugging together
- Cost-effective variant



Lloyd's Register



2 bar



60–500 mm



Product name:
BKD90-K2/(L)

Double wall insert

Quick to install and doubly secured: With 2 connections for system covers or inserts, you have maximum flexibility. You stay on the safe side with the blind plugs supplied, as the wall insert is leak-tight against gas and pressing water immediately after concreting – even without reworking.

- System covers or system inserts can be fitted on both sides
- Quick installation in waterproof concrete structures (class 1 and 2)
- Simple bundle possible by plugging together



Lloyd's Register



2 bar



100–500 mm



Product name:
BKD90-K2-EW/(L)

Double wall insert for double / element walls

Thanks to the additional rubber seal in the centre, this double wall insert is also suitable for double or element walls. With 2 connections for system covers or inserts, you have maximum flexibility. After concreting, the wall insert is leak-tight against gas and pressing water – even without reworking.

- For double or panelled walls thanks to additional sealing rubber
- System covers or system inserts can be fitted on both sides
- Bundle possible by plugging together



Lloyd's Register



2 bar



100–500 mm



Product name:
BKD90-AF-150/BE-VZ
BKD90-AF-150/BE-4A

Mounting flange with fastening elements

You simply plug the mounting flange into a core drilling or wall opening up to a maximum diameter of 85 mm. Depending on your budget, you can choose fastenings made of stainless steel (V4A) or in a cheaper galvanised version.

- Subsequent dowelling to core drillings up to 85 mm
- One-sided mounting of system covers or system inserts
- Quick installation in waterproof concrete structures (class 1 and 2)



2 bar



Product name:
BKD90-K-S30/(L)
BKD90-K-S45/(L)
BKD90-K-S60/(L)

Angular single wall insert

For every angle of your project: Reliably seal sloping penetrations at angles of 30°, 45° and 60°. Thanks to the polystyrene wedge and steel frame, fixing for installation is particularly easy. The one-sided connection for system covers or inserts leaves all options open to you. After concreting, the wall insert is leak-tight against gas and water.

- Safe installation of rigid, large cables/pipes
- Inclined penetration at angles of 30°, 45° and 60°
- One-sided mounting of system covers or system inserts
- Quick to install in waterproof concrete structures (class 1 and 2)



Lloyd's Register



2 bar



200–500 mm



Did you know that...

... we manufacture each wall insert for you according to wall thickness? The BKD 90 system only requires a minimum wall thickness of 50 mm. Incidentally, you can find more detailed information in the relevant product data sheets on our website.



Legend:



Tested by ...



Gas- and watertight up to ... bar



Wall thicknesses from ... – ... mm

■ BKD 90

Bayonet wall inserts



Angular wall insert

For every angle of your project: Double seal sloping penetrations at an angle of 30°, 45° and 60°. Thanks to the polystyrene wedge and steel frame, fixing for installation is particularly easy. With 2 connections for system covers or KSS systems, you have maximum flexibility. After concreting, the wall insert is gas and pressurised watertight.

- Safe installation of rigid, large cables/pipes
- Inclined penetration at angles of 30°, 45° and 60°
- System covers or system inserts can be fitted on both sides
- Quick to install in waterproof concrete structures (class 1 and 2)

Product name:

BKD90-K2-S30/(L)
BKD90-K2-S45/(L)
BKD90-K2-S60/(L)



Lloyd's Register



2 bar



240–500 mm



Wall insert with cuff technology

Simple elastic connection: Use a sleeve to connect empty conduits or flexible cable protection conduits. The one-sided connection for system covers or inserts leaves all options open to you. After concreting, the wall insert is leak-tight against gas and pressing water – even without reworking.

- One-sided mounting of system covers or system inserts
- Quick installation in waterproof concrete structures (class 1 and 2)
- Simple bundle possible by plugging together

Product name:

BKD90-K-MA50/(L) Clamping range: 50 = 40–50 mm
BKD90-K-MA63/(L) 63 = 50–63 mm
BKD90-K-MA89/(L) 89 = 75–89 mm



Lloyd's Register



0.5 bar



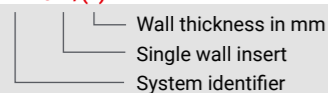
200–500 mm

Product index

Product index for BKD 90 (examples)

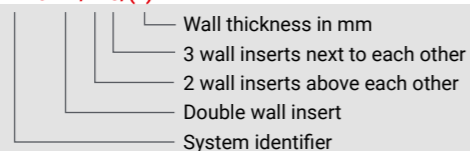
Bayonet single wall insert

BKD90-K/(L)



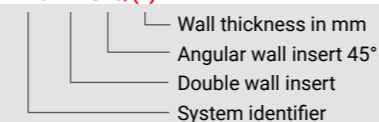
Bayonet double wall insert as stack 2 x 3

BKD90-K2/2x3/(L)



Bayonet angular wall insert 45° as a double wall insert

BKD90-K2-S45/(L)



Legend:



Tested by ...



Gas- and watertight up to ... bar



Wall thicknesses from ... – ... mm

■ BKD 90

System covers and inserts



Suitable for your application

Thanks to their split design, system inserts are perfect for sealing cables and pipes that have already been laid. The inserts can also be replaced at a later date and are made of high-quality materials such as A2 stainless steel and EPDM.

System covers also offer advantages: they are cost-effective and can be used flexibly in any building situation thanks to hot-shrink sleeves and collars. Another plus: the highly robust polycarbonate makes them particularly resistant.



Blind cover

Stay flexible if your plans change: A blind cover is included with all BKD 90 cable entries. This allows you to seal your wall insert at a later date to make it gas-tight and watertight.

- Blind plug for BKD 90 wall inserts
- GSS spanner required for assembly
- Inspection certificate: Lloyd's Register

Product name:

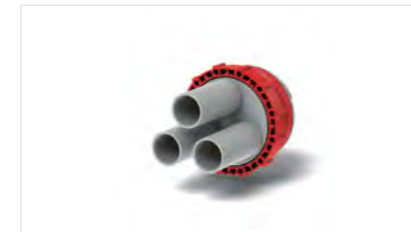
BKD90-D



Lloyd's Register



2 bar



System cover with hot-shrink sleeve

Quick and easy to install – and then immediately pressure-tight: Depending on the variant, this system cover can accommodate up to 5 cables and pipes with a diameter of 7–73 mm. Precisely fitting hot-shrink sleeves reliably seal media cables with larger clamping ranges, for example. Cold-shrink sleeves are also available on request.

- 3 variants for up to 5 cables/pipes with a diameter of 7–73 mm
- Precisely fitting hot-shrink sleeves for immediate sealing after installation
- Doubly secured with bayonet and screw connection

Product name:

BKD90-D-1/75-TM
BKD90-D-3/30(3/3)-TM
BKD90-D-5/20(5/5)-TM



Lloyd's Register



2.5 bar



System cover with cuff technology

Your choice if you want to connect a conduit or flexible cable protection conduit: Thanks to a large selection of collars, you can connect smooth walled pipes and corrugated pipes with a diameter of 40–115 mm. High-quality tensioning straps provide the necessary hold. The cover itself is double-secured.

- Sleeve for connecting pipes with a diameter of 40–115 mm
- 2 high-quality tensioning straps for secure fastening
- Doubly secured with bayonet and screw connection

Product name:

BKD90-D-MA40-50
BKD90-D-MA50-63
BKD90-D-MA65-75
BKD90-D-MA75-90
BKD90-D-MA100-115*



0.5 bar

* When ordering bundles, always be sure to order the standard and short versions for the BKD90-D-MA100-115 system cover.



Product name:
 BKD90-E-ZS/SnapIn/V2A/EPDM 1x(22-54)
 BKD90-E-ZS/SnapIn/V2A/EPDM/ 3x(4-25)
 BKD90-E-ZS/SnapIn/V2A/EPDM 5x(4-20)

System insert with multilayer technology

If you want to seal existing cables and pipes retrospectively, this insert is your solution. Thanks to the multilayer technology, you can adapt the system insert flexibly and directly on site – this is easy thanks to its division. The insert accommodates up to 5 cables or pipes with a diameter of 4–54 mm.

- Sealing of 5 cables/pipes between 4 and 54 mm
- Various inserts for flexible customisation on site
- Sealing of already laid cables and pipes possible
- Suitable for wall inserts HSI90



2 bar



Product name:
 BKD90-E-WE/SnapIn/V2A/EPDM/(Z)x(D)

System insert with interchangeable insert

Fits your requirements too: We customise the interchangeable rubber insert for you so that it reliably seals your cable situations. Another advantage: you can also replace and install the insert at a later date – for maximum flexibility.

- Customised production for numerous cable situations
- EPDM rubber insert can be replaced at a later date
- Sealing of already laid cables and pipes possible
- Suitable for wall inserts HSI90



2 bar



Product name:
 BKD90-E/SnapIn/V2A/EPDM/(Z)x(D)

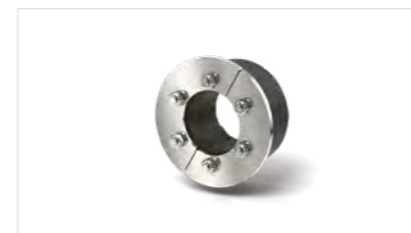
System insert with customised press plates

Customised for you: The individual system inserts are manufactured with customised press plates to reliably seal your cable situations. We always supply the customised system inserts in a split version for installation with cables and media that have already been laid.

- Customised production for numerous cable situations
- Sealing of already laid cables and pipes possible
- More safety with higher loads thanks to customised pressure plates
- Suitable for wall inserts HSI90



2 bar



Product name:
 BKD90-E-WE/V2A/EPDM/(Z)x(D)

System insert with interchangeable insert

Fits your requirements too: We manufacture the rubber interchangeable insert individually for you so that it reliably seals your cable situations. Another advantage: you can also replace and install the insert at a later date – for maximum flexibility.

- Customised production for numerous cable situations
- EPDM rubber insert can be replaced at a later date
- Sealing of already laid cables and pipes possible
- Suitable for wall insert BKD 90



2 bar

Installation situations and example applications

See our services for yourself in real-life application: the following installation situations and practical examples illustrate our customised solutions.



BKD 90 with fixed and loose flange design

Legend:



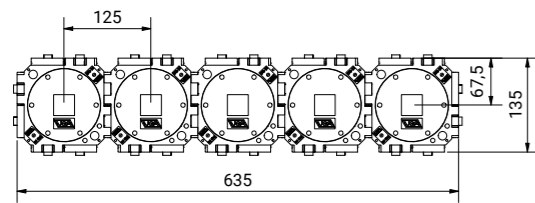
Gas- and watertight up to ... bar

Technical assembly drawings

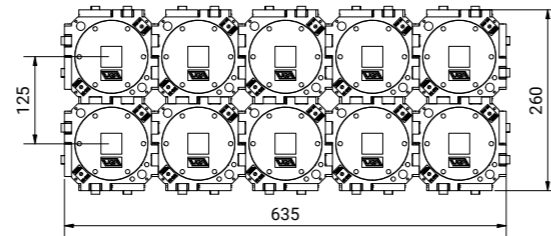
These drawings illustrate the advantages of our cable entries – such as variable bundling or the excellent ease of planning thanks to the fixed centre distances.

Wall inserts: Bundle without spacers

BKD90-K(2)/1x5/(L)

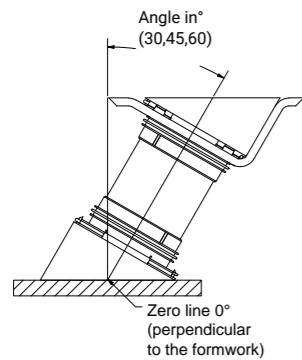


BKD90-K(2)/2x5/(L)



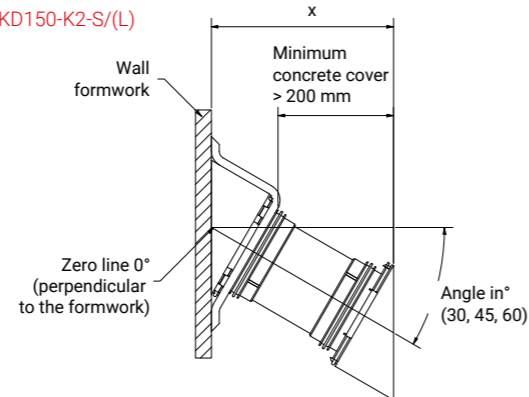
Angular wall insert: Floor installation

BKD150-K2-S/(L)



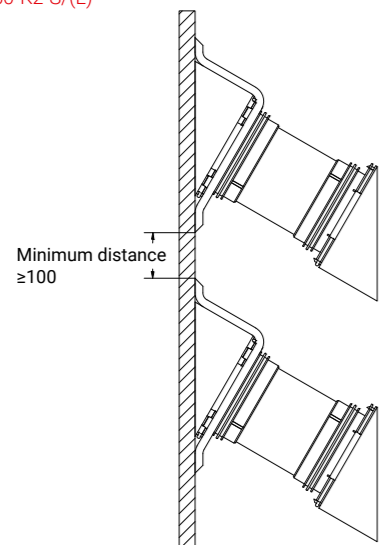
Angular wall insert: Wall installation

BKD150-K2-S/(L)



Angular wall inserts: Minimum distance above each other

BKD150-K2-S/(L)



Maximum occupancy table: System insert with interchangeable insert

BKD90-E-WE/SnapIn/V2A/EPDM (Z)x(D) 3 x DN 17 mm or 5 x DN 13 mm or 9 x DN 8 mm

Maximum occupancy

Z = number of cables/lines	D = diameter of the cables/lines
0	Blind plug possible
1	up to 40 mm
3	up to 17 mm
5	up to 13 mm
7	up to 11 mm
9	up to 8 mm

Other assignments and combinations of different diameters also possible.

Maximum occupancy table: System insert with multilayer technology

Standard variants

Product name	Number of cables/pipes	Cable/pipe D in mm
BKD90-E-ZS/SnapIn/V2A/EPDM 1x(22-54)	0-1	22-54
BKD90-E-ZS/SnapIn/V2A/EPDM 3x(4-25))	0-3	4-25
BKD90-E-ZS/SnapIn/V2A/EPDM 5x(4-20)	0-5	44-20

Maximum occupancy table for customised press plates

Maximum occupancy

Z = number of cables/lines	D = diameter of the cables/lines
0	Blind plug possible
1	up to 54 mm
3	up to 27 mm
5	up to 20 mm
7	up to 15 mm
9	up to 13 mm

Other assignments and combinations of different diameters also possible.

Ideal accessories

Spacers, mounting tools and more – explore our range of accessories and practical extras on our website. Simply scan the QR code to get there.



The proven cable entry

We have developed the KD 110 system to connect the most commonly used pipes with an outer diameter of 110 mm to buildings so they are leak-tight against gas and pressing water. UGA is the only manufacturer to market this size. The conical sealing system consists of a wall insert with a matching cover and insert. With a clear width of 117 mm and a smaller centre distance, this system is your choice where space is limited. Compared to the competition, UGA also offers the largest selection of system components.



Single wall insert

Quickly installed and money saved: The one-sided connection for system covers or inserts leaves all options open to you. You are on the safe side with the blind plug supplied, as the wall insert is leak-tight against gas and pressing water immediately after concreting – even without reworking.

- One-sided mounting of system covers or system inserts
- Quick installation in waterproof concrete structures (class 1 and 2)
- Simple bundle possible by plugging together
- Cost-effective variant

Product name:
KD110-K/(L)



Fraunhofer Institute



2.5 bar



Wall insert with cuff technology

Simple elastic connection: Use a sleeve to connect empty conduits or flexible cable protection conduits. The one-sided connection for system covers or inserts leaves all options open to you. After concreting, wall insert is leak-tight against gas and pressing water – even without reworking.

- One-sided mounting of system covers or system inserts
- Quick installation in waterproof concrete structures (class 1 and 2)
- Simple bundle possible by plugging together

Product name:
KD110-K-MA115/(L)
KD110-K-MA125/(L)

Clamping range:
115 = 100–115 mm
124 = 110–125 mm



Fraunhofer Institute



0.5 bar



Double wall insert

Quick to install and doubly secured: With 2 connections for system covers or inserts, you have maximum flexibility. You stay on the safe side with the blind plugs supplied, as the wall insert is leak-tight against gas and pressing water immediately after concreting – even without reworking.

- System covers or system inserts can be fitted on both sides
- Quick installation in waterproof concrete structures (class 1 and 2)
- Simple bundle possible by plugging together

Product name:
KD110-K2/(L)



Fraunhofer Institute



2.5 bar



Angular single wall insert

For every angle of your project: Reliably seal sloping penetrations at angles of 30°, 45° and 60°. Thanks to the polystyrene wedge and steel frame, fixing for installation is particularly easy. The one-sided connection for system covers or inserts leaves all options open to you. After concreting, the wall insert is leak-tight against gas and pressing water.

- Safe installation of rigid, large cables/pipes
- Inclined penetration at angles of 30°, 45° and 60°
- One-sided mounting of system covers or system inserts
- Quick to install in waterproof concrete structures (class 1 and 2)

Product name:
KD110-K-S30/(L)
KD110-K-S45/(L)
KD110-K-S60/(L)



Fraunhofer Institute



2.5 bar



Double wall insert for double/element walls

Thanks to the additional rubber seal in the centre, this double wall insert is also suitable for double or element walls. With 2 connections for system covers or inserts, you have maximum flexibility. After concreting, the wall insert is leak-tight against gas and pressing water – even without reworking.

- For cavity or prefabricated walls thanks to additional sealing rubber
- System covers or system inserts can be fitted on both sides
- Bundle possible by plugging together

Product name:
KD110-K2-EW/(L)



Fraunhofer Institute



2.5 bar

The KD 110 is leak-proof – that's a promise!

Our wall inserts and system covers have undergone rigorous testing at the Fraunhofer Institute, which certified that our products achieved outstanding results that far exceeded the values required in practice.



Legend:



Tested by ...



Gas- and watertight up to ... bar

KD 110

Wall inserts



Angular wall insert

For every angle of your project: Double seal angled penetrations at an angle of 30°, 45° and 60°. Thanks to the polystyrene wedge and steel frame, fixing for installation is particularly easy. With 2 connections for system covers or KSS systems, you have maximum flexibility. After concreting, the wall insert is leak-tight against gas and pressing water.



Fraunhofer Institute



2.5 bar

Product name:

KD110-K2-S30/(L)
KD110-K2-S45/(L)
KD110-K2-S60/(L)

- Safe installation of rigid, large cables/pipes
- Inclined penetration at angles of 30°, 45° and 60°
- System covers or system inserts can be fitted on both sides
- Quick to install in waterproof concrete structures (class 1 and 2)



Double wall insert with fixed and loose flange design

Suitable for waterproofing in black troughs (DIN 18533): The circumferential fixed and loose flange design is suitable for sheet-type waterproofing. With 2 connections for system covers or inserts, you have maximum flexibility. You are on the safe side with the blind plugs supplied, as the wall insert is leak-tight against gas and pressing water immediately after concreting – even without reworking.



Product name:

KD110-K2-F+L-W(1/2)/(L)/V2A

- Available for all black trough load cases in accordance with DIN 18533
- System covers or system inserts can be fitted on both sides
- Customised arrangement of the wall insert before production

Product index

Product index for KD 110 (examples)

Single wall insert	Double wall insert as stack 2 x 3	Angular wall insert 45° as a double wall insert
KD110-K/(L)	KD110-K2/2x3/(L)	KD110-K2-S45/(L)
<ul style="list-style-type: none"> Wall thickness in mm Single wall insert System identifier 	<ul style="list-style-type: none"> Wall thickness in mm 3 wall inserts next to each other 2 wall inserts above each other Double wall insert System identifier 	<ul style="list-style-type: none"> Wall thickness in mm Angular wall insert 45° Double wall insert System identifier
Double wall insert		
KD110-K2/(L)		
<ul style="list-style-type: none"> Double wall insert 		

Legend:



Tested by ...



Gas- and watertight up to ... bar

KD 110

System covers and inserts

Suitable for your application

Thanks to their split design, system inserts are perfect for sealing cables and pipes that have already been laid. The inserts can also be replaced at a later date and are made of high-quality materials such as A2 stainless steel and EPDM.

System covers also offer advantages: they are cost-effective and can be used flexibly in any building situation thanks to hot-shrink sleeves and collars. Another plus: the highly robust polycarbonate makes them particularly resistant.



Blind cover

Stay flexible if your plans change: All KD 110 cable entries are supplied with a blind cover Scope of delivery. This allows you to seal your wall insert at a later date to make it gas-tight and watertight.



Fraunhofer Institute



2.5 bar

Product name:

KD110-D

- Blind plug for KD 110 wall inserts
- GSS spanner required for assembly
- Test certificate: Fraunhofer Institute



System insert pipe

Sealing of a dimensionally stable pipe with an outer diameter of 110 mm in a KD 110 wall insert.



Lloyd's Register



2.5 bar

Product name:

KD110-D-DGM110

- Retrofitting possible
- GSS spanner required for assembly
- Inspection certificate: Lloyd's Register



System cover with hot-shrink sleeve

Quick and easy to install – and then immediately pressure-tight: Depending on the variant, this system cover can accommodate up to 7 cables and pipes with a diameter of 7–78 mm. Precisely fitting hot-shrink sleeves reliably seal media cables with larger clamping ranges, for example. Cold-shrink sleeves are also available on request.



Fraunhofer Institute



2.5 bar

Product name:

KD110-D-1/80-TM
KD110-D-3/46(3/3)-TM
KD110-D-7/32(3/3)/25(4/3)-TM

- Variants for up to 7 cables/pipes with a diameter of 7–78 mm
- Precisely fitting hot-shrink sleeves for immediate sealing after installation
- Secured by screw connection



System cover with cuff technology

Your choice if you want to connect a conduit or flexible cable protection conduit: Thanks to a large selection of collars, you can connect smooth-walled pipes and corrugated pipes with a diameter of 65–125 mm. High-quality tensioning straps provide the necessary hold. The cover itself is double-secured.

- Sleeve for connecting pipes with a diameter of 65–125 mm
- 2 high-quality tensioning straps for secure fastening
- Secured by screw connection

Product name:
 KD110-D-MA65-75
 KD110-D-MA75-89
 KD110-D-MA100-115
 KD110-D-MA115-125



Fraunhofer Institute



0.5 bar



System insert with interchangeable insert

Fits your requirements too: We manufacture the interchangeable insert made of EPDM individually for you so that it reliably seals your cable situations. Another advantage: you can also replace and install the insert at a later date – for maximum flexibility.

- Customised production for numerous cable situations
- EPDM insert can be retrofitted
- Sealing of already laid cables and pipes possible
- Suitable for wall inserts KD 110

Product name:
 KD110-E-WE/EPDM/(Z)x(D)



Fraunhofer Institute



2 bar

Maximum occupancy table: System insert with interchangeable insert

Maximum occupancy

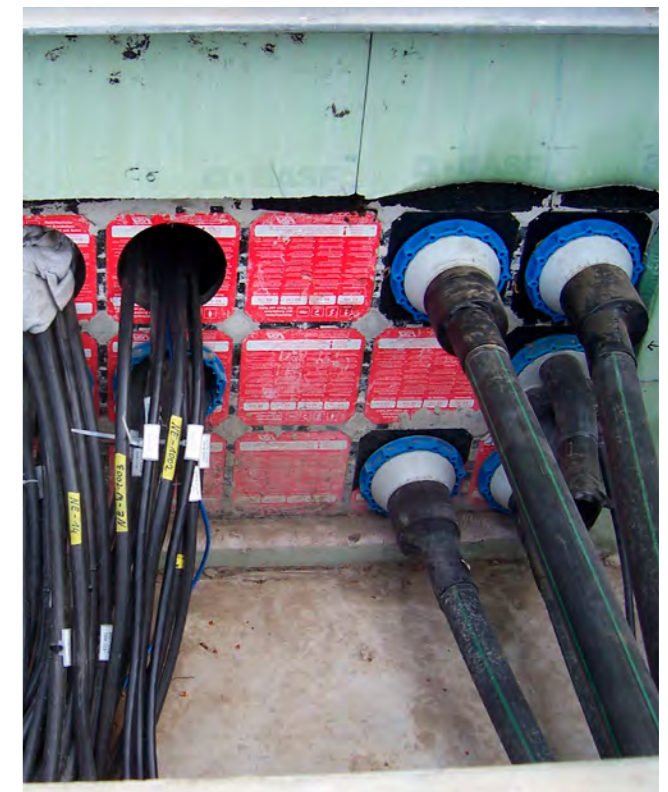
Z = number of cables/lines	D = diameter of the cables/lines
0	Blind plug possible
1	up to 110 mm
3	up to 48 mm
5	up to 36 mm
7	up to 32 mm
9	up to 26 mm

Other assignments and combinations of different diameters also possible.

Our products at work



KD110-K2/3x4/(L) with system cover KD110-D-DGM110



KD110-K2/3x6/(L) with system cover KD110-D-1/80-TM

Why is it called KD 110 and not BKD 110?

In short: our 110 does not have a bayonet system. The big advantage is that it is significantly more space-saving than the BKD 150, for example, which can make all the difference when every millimetre counts on the construction site and precision is required. One of the reasons for this is the smaller centre distance for stacks. You can find out more on our website.



Legend:



Tested by ...



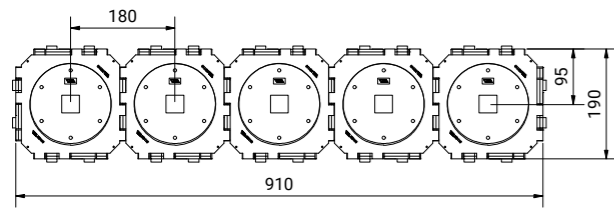
Gas- and watertight up to ... bar

Technical assembly drawings

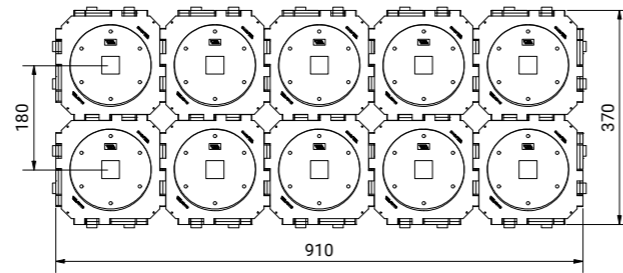
These drawings illustrate the advantages of our cable entries – such as variable bundle or the excellent ease of planning thanks to the fixed centre distances.

Wall inserts: Stack without Spacers

KD110-K(2)/1x5/(L)

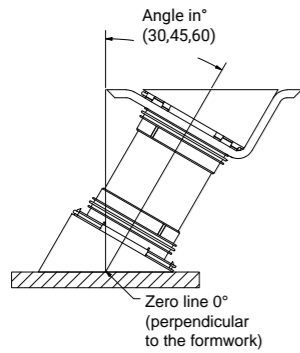


KD110-K(2)/2x5/(L)



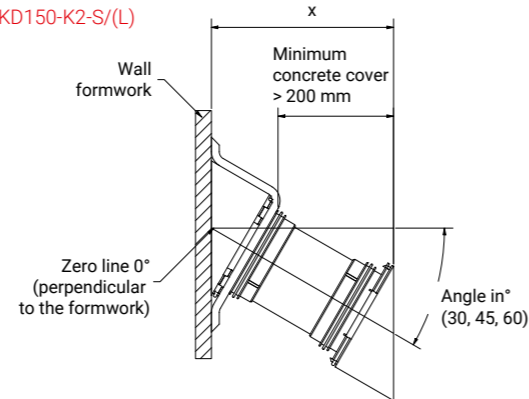
Angular wall insert: Floor installation

BKD150-K2-S/(L)



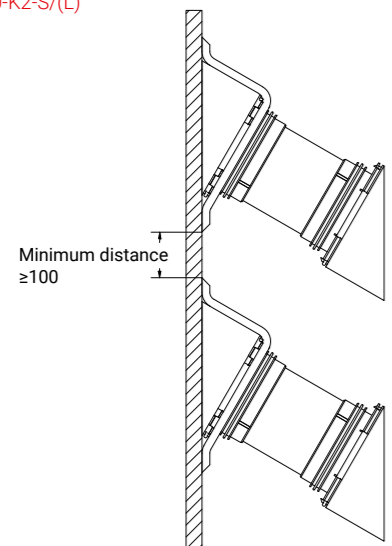
Angular wall insert: Wall installation

BKD150-K2-S/(L)



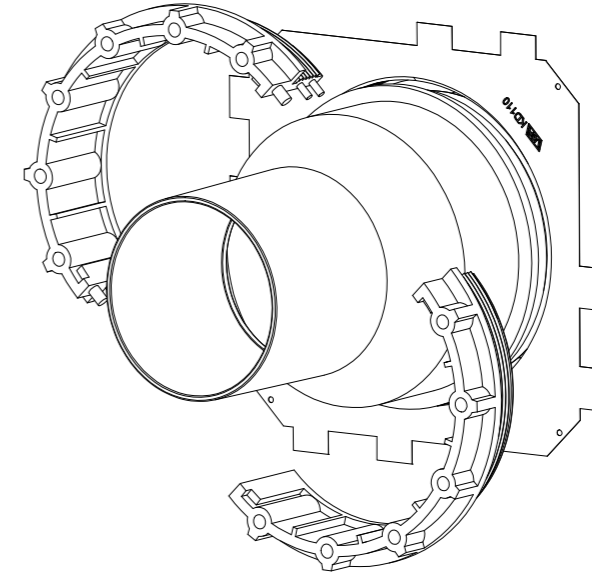
Angular wall inserts: Minimum distance above each other

BKD150-K2-S/(L)



Special feature of the KD 110: System cover with split nut

The system cover of the KD110 is the only system cover of the cable entries that can be split and therefore also retrofitted.

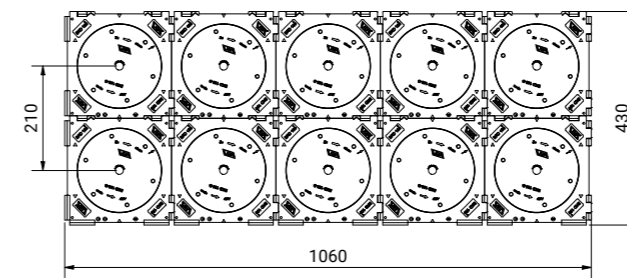


Centre distance – cable entries in comparison

By reducing the centre distance of the KD 110, we create more space for cable entries compared to the BKD 150. In figures, this means that the KD 110 system requires 150 mm less space in length and 60 mm less in height than the BKD 150 system.

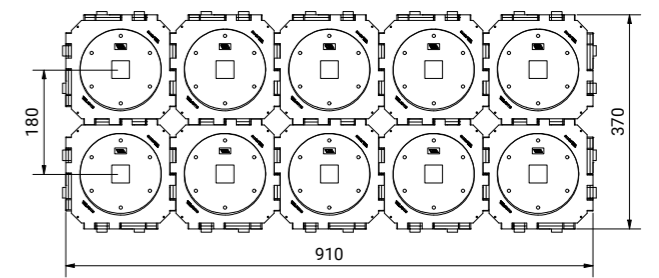
BKD150

BKD150-K(2)/2x5/(L)



KD110

KD110-K(2)/2x5/(L)



Ideal accessories

Spacers, mounting tools and more – explore our range of accessories and practical extras on our website. Simply scan the QR code to get there.





Get in touch with us!

E-MAIL info@uga.eu

HOTLINE +49 7324 9696-33

Contact person

Scan this QR code to find the right contact person for your in-house or field service:

