

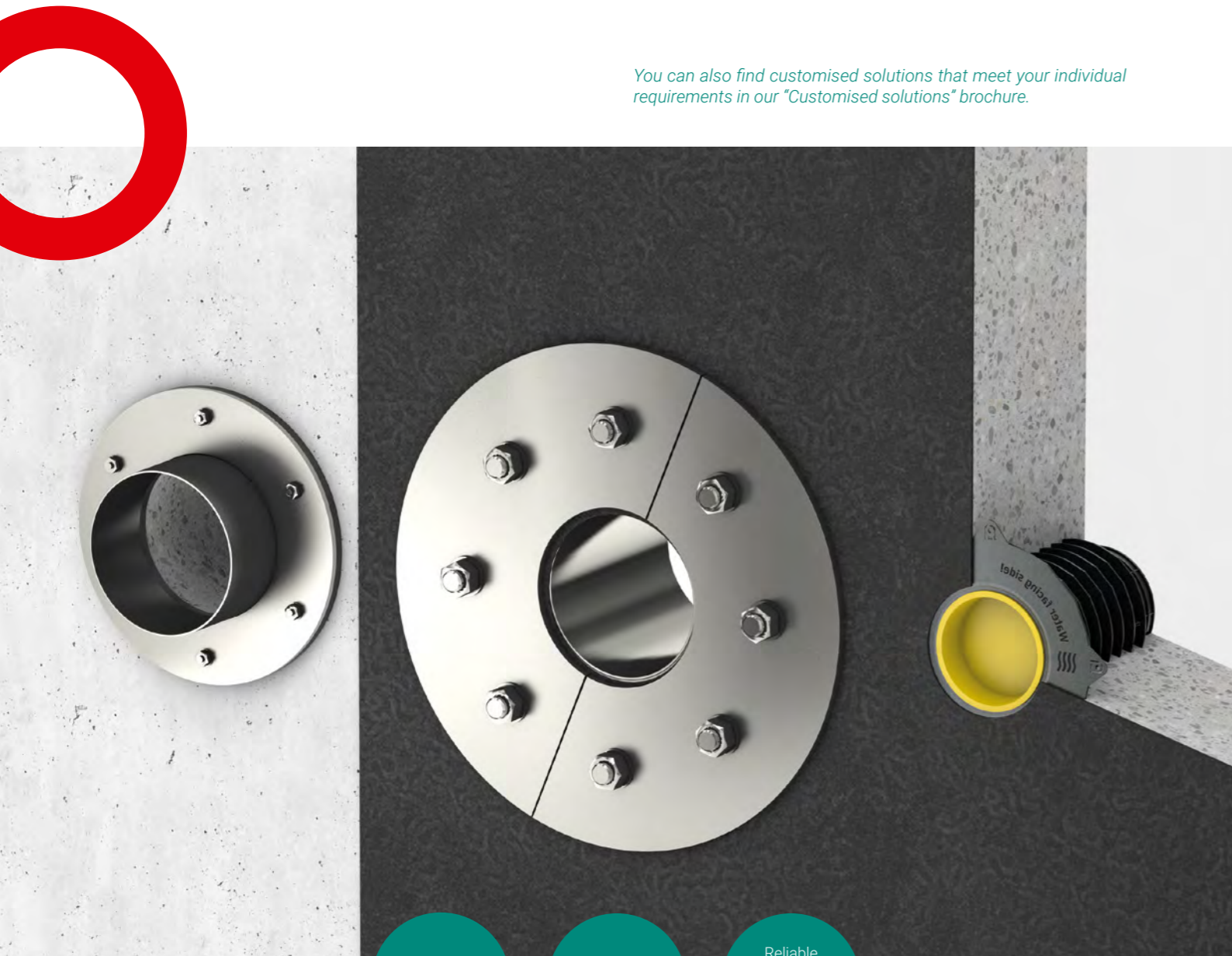
◎ **Wall sleeves**
for setting in concrete | for retrofitting



© Wall sleeves

for setting in concrete and retrofitting

You can also find customised solutions that meet your individual requirements in our "Customised solutions" brochure.



Savings potential compared to core drilling

Flexibility with regard to sealing levels in the wall

Reliable dimensional accuracy of the penetration

Installing pipes through walls – or through ceilings and foundations

Get all the preparations done for laying cables and pipes – with our wall sleeves, you can create openings in walls, ceilings and floor slabs. In contrast to core drilling, you do not damage the reinforcement and the wall openings are more precise.

We can supply wall sleeves made of plastic, fibre cement or stainless steel in the desired diameter and length to suit your requirements.

Whether for watertight concrete structures or black troughs: you can use our wall sleeves for all wall structures. Are you planning new buildings or do you need a solution for existing buildings and renovations? In either case, you can use our wall sleeves to create a gas-tight and watertight connection to the wall – even longitudinally watertight! Our stainless steel wall sleeves also allow you to make multiple arrangements.

Wall sleeves for setting in concrete

Wall sleeves for setting in concrete are your first choice if you are planning a new build. We offer a wide range of sizes and materials, from stainless steel to fibre cement. We customise our products to the wall thickness for optimum installation flush with the formwork.

We can also customise the diameters of our stainless steel wall sleeves outside the standard delivery programme and exactly to your specifications. Even non-straight penetrations are no challenge for us: with the single or double-sided bevel cut, the transit through the wall, floor or ceiling can simply be set at an angle.

Our wall sleeves and DIN 18533

DIN 18533 is the basis for long-term protection against water ingress for components in contact with the ground – and our specification for the production of wall sleeves. A soil survey will determine which load case your project needs to be waterproofed to and which impact class you require. But rest assured: at UGA you will find the right solution for all cases. We supply wall sleeves for non-pressing water, pressing water and moderately pressing water classes.

Further information on DIN standards, necessary specifications and interesting facts for your construction project can be found in our brochure "About UGA, about us".

Wall sleeves for retrofitting

Our wall sleeves for retrofitting are ideal for renovations. No matter where you want to renovate in your building, you can use our wall sleeves in all types of walls, floors and ceilings. Simply install the wall sleeve on an existing surface. Our split version wall sleeves are the ideal solution for cables and pipes that have already been laid.

We also take care of everything else, because the required EPDM packings and additional sealants are available from us for any type of substrate. This means we cover every type of wall.

For precise and clean wall openings

- Holds dimensions for exact inside diameters – the perfect preparation for the subsequent use of sealing systems
- No reworking necessary thanks to clean wall finish without unevenness
- Reduced risk of leaks in the event of concreting faults (e.g. blowholes)

Wall sleeves

for setting in concrete

Wall duct in new buildings

Wall sleeves for setting in concrete are your first choice if you are planning a new build. We offer a wide range of sizes and materials, from stainless steel to fibre cement. We customise our products to the wall thickness for optimum installation flush with the formwork. Practical extra: Some of our plastic and stainless steel wall sleeves are also available with a PE dirt cover. This prevents dirt and concrete slurry from getting into the wall sleeve.



Fibre cement wall sleeve

Fibre cement wall sleeve in closed and split version. The special material enables optimum bonding with concrete. Optional matching PE covers to protect against dirt and concrete slurry are also available.

- Very high leak-tightness due to fibre cement wall sleeve made of special material for optimum connection with concrete
- For waterproof concrete structures (class 1 and 2)
- Availability in a wide range of standard variants



FHRK

Product name:
FU-FZ/(G)/(A)/U(L)



Plastic wall sleeve

High flexibility on site: The FU-KFR wall sleeve can be customised to all wall thicknesses or extended as required thanks to the integrated sleeve. The wall sleeve has a sawing area with guides and a length scale, making installation quick and easy. The supplied sealing caps protect the wall sleeve from soiling during the shell construction phase.

- Optimally designed inner wall to accommodate the UGA sealing systems
- With adhesive flange to DIN 18533
- Use in buildings to be constructed



FHRK

Product name:
FU-KFR/100/U300
FU-KFR/100/U500
FU-KFR/150/U300
FU-KFR/150/U500
FU-KFR/200/U300
FU-KFR/200/U500



Plastic wall sleeve

Plastic wall sleeve is high-quality and solid-walled made of rigid PVC. Product is only available in a non-split version, i.e. cables and pipes can only be pulled in after concreting. The product is supplied with PE covers to protect against dirt and concrete slurry.

- Very high leak-tightness thanks to two lip seals and mechanical roughening in the centre
- Low weight
- For waterproof concrete structures (class 1 and 2)
- Available in five different sizes



FHRK

Product name:
FU-K/80/U(L)
FU-K/100/U(L)
FU-K/125/U(L)
FU-K/150/U(L)
FU-K/200/U(L)



Wall sleeve with fixed/loose flange construction

Wall sleeve with fixed/loose flange construction for sheet sealing materials. Product is only available in a non-split version, i.e. cables and pipes can only be pulled in after concreting.

- For the black trough load case for moderate and pressing water in accordance with DIN 18533 W2.1-E, DIN 18533 W2.2-E
- M20 bolt and 10 mm plate material, fixed flange 160 mm circumferential, loose flange 150 mm circumferential
- High degree of customisation when adapting diameters and multiple arrangements



Lloyd's Register

Product name:
FU/F+L/W2/(A)/U(L)/O(L)/V2A



Wall sleeve with fixed/loose flange construction

Wall sleeve with fixed/loose flange construction for sheet sealing materials. Product is only available in a non-split version, i.e. cables and pipes can only be pulled in after concreting.

- For the black trough load case for non-pressing water in accordance with DIN 18533 W1.1-E, DIN 18533 W1.2-E
- M12 bolt and 6 mm plate material, fixed flange 70 mm circumferential, loose flange 60 mm circumferential
- High degree of customisation when adapting diameters and multiple arrangements



Lloyd's Register

Product name:
FU/F+L/W1/(A)/U(L)/O(L)/V2A



Special requirements? No problem!

Do you need wall sleeves in multiple arrangements, with a special angle or with customised dimensions? We manufacture customised wall sleeves according to your requirements. Take a look at our brochure on customised solutions. Or get in touch with your contact person.



Legend:



Wall sleeves

for setting in concrete



Product name:
FU/(G)/(A)/U(L)/O(L)/V2A

Wall sleeve with central flange

Wall sleeve with central flange for setting in concrete in non-split or split version (G). In the split version, cables and pipes may already have been laid before concreting – the wall sleeve has a split surface. The product is supplied with PE covers to protect against dirt and concrete slurry.

- Dimensionally stable wall sleeve with stainless steel central flange
- For waterproof concrete structures (class 1 and 2)
- Central flange is 100 mm circumferential
- High degree of customisation when adapting diameters and multiple arrangements



Product name:
FU/KF/(A)/U(L)/O(L)/V2A

Wall sleeve with adhesive/levelling flange

Wall sleeve with adhesive/filler flange for liquid sealing materials. Product is only available in a non-split version, i.e. cables and pipes can only be pulled in after concreting. The product is supplied with PE covers to protect against dirt and concrete slurry.

- For the black trough load case for non-pressing and moderately pressing water in accordance with DIN 18533 W1.1-E, DIN 18533 W1.2-E and DIN 18533 W2.1-E
- Adhesive flange = 120 mm circumferential, 6 mm panel material
- High degree of customisation when adapting diameters and multiple arrangements



MFPA
Leipzig

Would you like to know more?

Further information can be found in the product data sheets and assembly instructions in the download area of our website. Scan this QR code to get there.



Wall sleeves

for retrofitting



Wall penetration in existing buildings

We won't leave you out in the rain on the construction site. As your reliable partner, we are always at your side to find customised solutions for every type of wall and location.

Practical extra: Some of our wall sleeves are also available with a PE dirt cover. This prevents dirt and concrete milk from getting into the wall sleeve.



Product name:
FU-NA/(A)/U(L)/O(L)/V2A

Stem flange

Front mounting flange in closed design for retrofitting with 10 mm packings for renovation measures for inappropriate break-outs and core drilling. Cables and pipes can only be pulled in or laid after installation.

- For waterproof concrete load classes 1 and 2
- Circumferential flange 60 mm, M8 countersunk head wall tie V4A, 10 mm EPDM rubber insert
- High degree of customisation when adapting diameters and multiple arrangements



Lloyd's
Register



Product name:
FU-NA/G/(A)/U(L)/O(L)/V2A

Stem flange

Pre-wall flange in split version with 10 mm packings for renovation measures for improper break-outs and core drilling. Cables and pipes may already be laid. Due to the split design of the front mounting flange, cables and pipes that have already been laid pose no problem.

- For waterproof concrete load classes 1 and 2
- Circumferential flange 60 mm, M8 countersunk head wall tie V4A, 10 mm EPDM rubber layer
- High degree of customisation when adapting diameters and multiple arrangements



Lloyd's
Register



It's the combination that makes the difference!

Do you want to seal both the black trough and a media pipe at the same time? This is possible with our rubber press seals (GPD) as combination or special application products. Just take a look at the sealing inserts brochure. Please contact us if you have any questions!

Legend:





Wall sleeve with adhesive/levelling flange

Wall sleeve with adhesive/levelling flange, available in split or non-split version. The product is suitable for renovation measures and subsequent cable and pipe laying when using liquid sealing materials. The split version of the product is only possible in accordance with DIN 18533. In the split version, cables and pipes can already be laid; in the non-split version, laying is only possible after installation.

Product name:
FU-NA/(G)/KF/(A)/U(L)/O(L)/V2A

- Adhesive flange = 120 mm circumferential, 6 mm panel material
- High degree of customisation when adapting diameters and multiple arrangements



MPPA
Leipzig



Wall sleeve with fixed/loose flange construction

Wall sleeve with fixed/loose flange construction for sheet waterproofing materials for retrofitting. Product is ideal for renovation measures for penetrations in projects with sheet-type waterproofing materials for moderately pressing and pressing water in accordance with DIN 18533. Due to the split version, cables and pipes that have already been laid do not pose a problem.

Product name:
FU-NA/F+L/G/W2/(A)/U(L)/O(L)/V2A

- For the black trough load case for moderate and pressing water in accordance with DIN 18533 W2.1-E, DIN 18533 W2.2-E
- M20 bolt and 10 mm plate material, fixed flange 160 mm circumferential, loose flange 150 mm circumferential
- Customised adjustment of diameter and multiple arrangement



Wall sleeve with fixed/loose flange construction

Wall sleeve with fixed/loose flange construction for sheet waterproofing materials for retrofitting. Product is ideal for renovation measures for penetrations in projects with sheet-type waterproofing materials for moderately pressing and pressing water in accordance with DIN 18533. Cables and pipes can only be pulled in or laid after installation.

Product name:
FU-NA/F+L/W2/(A)/U(L)/O(L)/V2A

- For the black trough load case for moderate and pressing water in accordance with DIN 18533 W2.1-E, DIN 18533 W2.2-E
- M20 bolt and 10 mm plate material, fixed flange 160 mm circumferential, loose flange 150 mm circumferential
- High degree of customisation when adapting diameters and multiple arrangements



Wall sleeve with fixed/loose flange construction

Wall sleeve with fixed/loose flange construction for sheet waterproofing materials for retrofitting. Product is ideal for renovation measures for penetrations in projects with sheet-type waterproofing materials for non-pressing water in accordance with DIN 18533. Due to the split design, cables and pipes that have already been laid do not pose a problem.

Product name:
FU-NA/F+L/G/W1/(A)/U(L)/O(L)/V2A

- For the black trough load case for non-pressing water in accordance with DIN 18533 W1.1-E, DIN 18533 W1.2-E
- M12 bolt and 6 mm plate material, fixed flange 70 mm circumferential, loose flange 60 mm circumferential
- Customised adjustment of diameter and multiple arrangement



Wall sleeve with fixed/loose flange construction

Wall sleeve with fixed/loose flange construction for sheet waterproofing materials for retrofitting. Product is ideal for renovation measures for penetrations in projects with sheet-type waterproofing materials for non-pressing water in accordance with DIN 18533. Cables and pipes can only be pulled in or laid after installation.

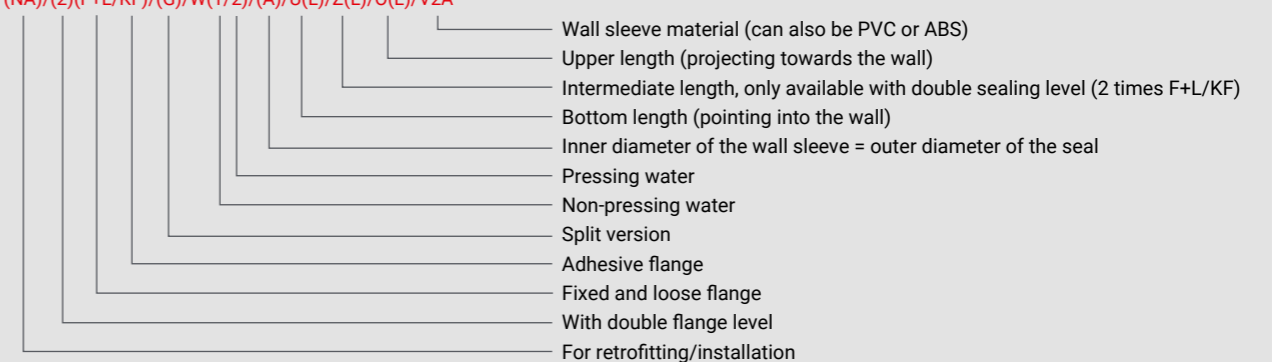
Product name:
FU-NA/F+L/W1/(A)/U(L)/O(L)/V2A

- For the black trough load case for non-pressing water in accordance with DIN 18533 W1.1-E, DIN 18533 W1.2-E
- M12 bolt and 6 mm plate material, fixed flange 70 mm circumferential, loose flange 60 mm circumferential
- High degree of customisation when adapting diameters and multiple arrangements

Product index

Product index for GPD (examples)

FU-(NA)/(2)(F+L/KF)/(G)/W(1/2)/(A)/U(L)/Z(L)/O(L)/V2A



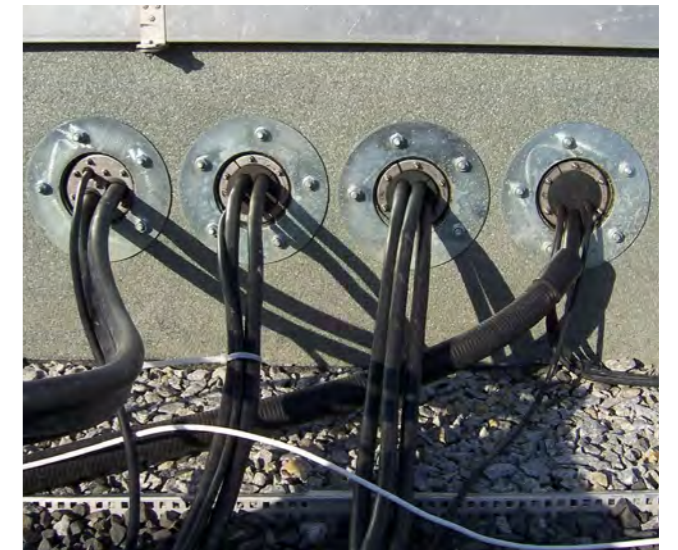
Specifications for flange constructions in accordance with DIN 18533

OD pipe or cable fed through	ID wall sleeve	Pressing water (W2)		Non-pressing water (W1)		Moderately pressing water (W2.1-E)
		OD fixed flange	OD loose flange	OD fixed flange	OD loose flange	OD adhesive flange
0-63 mm	100 mm	425 mm	415 mm	245 mm	235 mm	345 mm
0-85 mm	125 mm	450 mm	440 mm	270 mm	260 mm	370 mm
0-112 mm	150 mm	475 mm	465 mm	295 mm	285 mm	395 mm
0-162 mm	200 mm	525 mm	515 mm	345 mm	335 mm	445 mm
0-212 mm	250 mm	575 mm	565 mm	395 mm	385 mm	495 mm
0-260 mm	300 mm	625 mm	615 mm	445 mm	435 mm	545 mm
0-310 mm	350 mm	677 mm	667 mm	497 mm	487 mm	597 mm
0-350 mm	400 mm	727 mm	717 mm	547 mm	537 mm	647 mm
0-400 mm	450 mm	777 mm	767 mm	597 mm	587 mm	697 mm
0-450 mm	500 mm	827 mm	817 mm	647 mm	637 mm	747 mm

Our products at work



FU-FZ100/G/U(L) with mounting set



FU-NA/F+L/W1/100/U(L)



FU-NA/150/1x4/080



In the spotlight: the split fibre cement wall sleeve

The split version of the fibre cement wall sleeve is ideal for sealing already laid cables and for uneven wall breakthroughs. This product is impressive: 1) it can seal many cables at the same time; 2) it is cost-efficient; and 3) it seals perfectly.

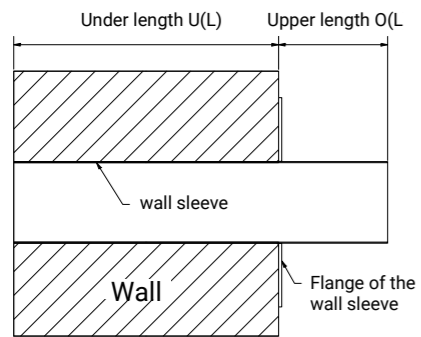
Wall sleeves

Additional pages

Technical assembly drawings

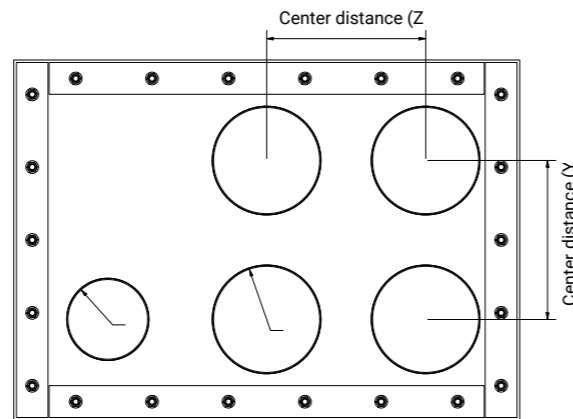
These drawings illustrate the advantages of our wall sleeves – such as variable centre distances or available flange sizes.

Wall section with explanation of the upper length/lower length



Variable number, diameter and centre distances of the wall sleeves

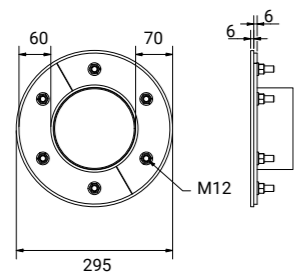
Front view of fixed flange with multiple arrangement



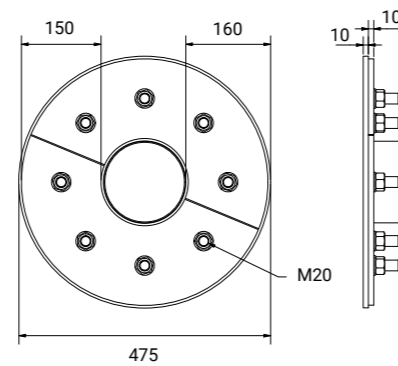
Variable number, diameter and center distances of the lining tubes possible

Flange sizes of wall sleeves

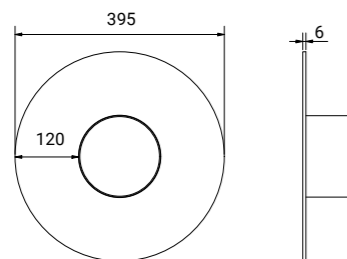
Fixed and loose flange non-pressing water W1



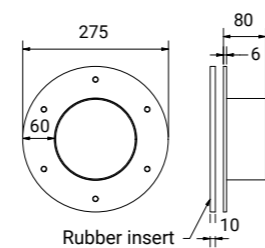
Fixed and loose flange pressing water W2



Adhesive/levelling flange moderately pressing water W2.1-E



Stem flange



Installation situations and example applications

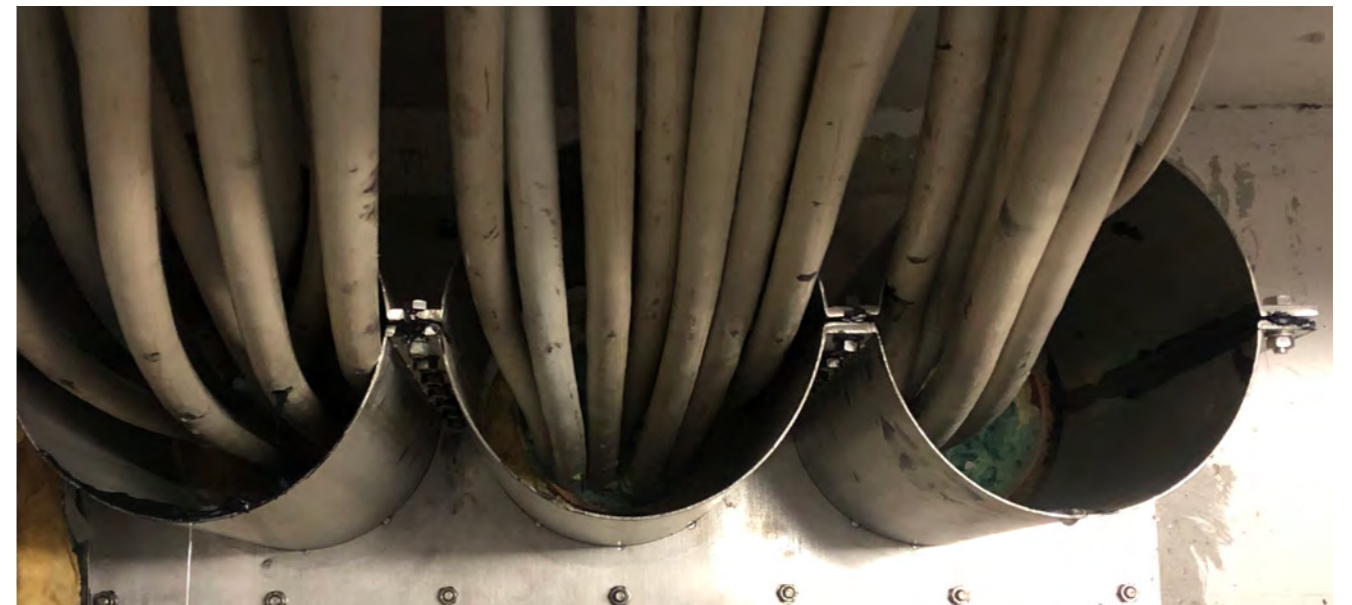
See our services for yourself in real-life application: the following installation situations and practical examples illustrate our customised solutions.



FU-FZ/G/(A)/U(L)



FU-NA/G/(A)/O(L)



FU-NA/G/(A)/1x3/O(L)

Ideal accessories

Spacers, mounting tools and more – explore our range of accessories and practical extras on our website. Simply scan the QR code to get there.





Grid of dotted lines for notes.

Grid of dotted lines for notes.





Get in touch with us!

E-MAIL info@uga.eu

HOTLINE +49 7324 9696-33

Contact person

Scan this QR code to find the right contact person for your in-house or field service:

